

The background of the slide is a light gray gradient with several realistic water droplets of various sizes scattered across it. The droplets have highlights and shadows, giving them a three-dimensional appearance.

# BENTHIC MACROINVERTEBRATES

2015

PRESENTATOR: JACK  
GALLOWAY and CHARLIE  
HEACOCK

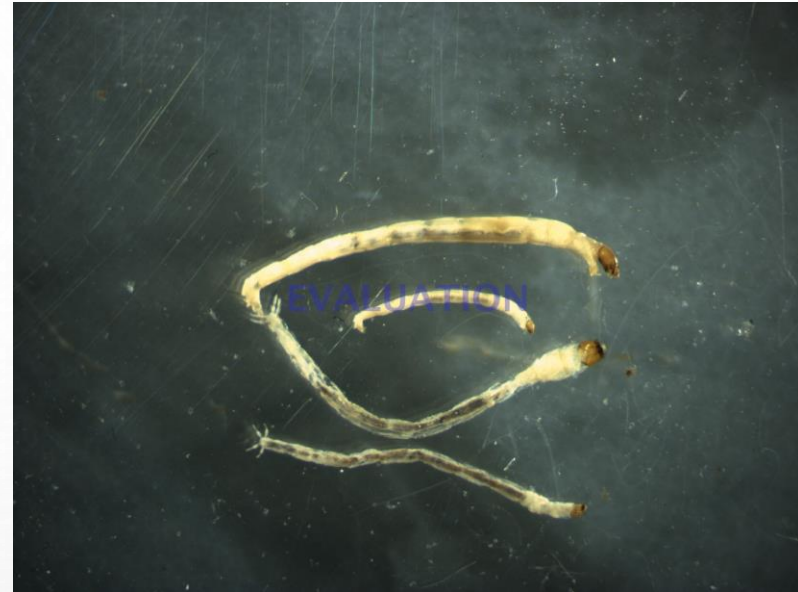
# WHAT?

- ORGANISMS WITH NO BACKBONE AND CAN BE SEEN WITH THE NAKED EYE



# WHERE?

- FOUND IN  
STREAMS,  
RIVERS,  
WETLANDS AND  
LAKES

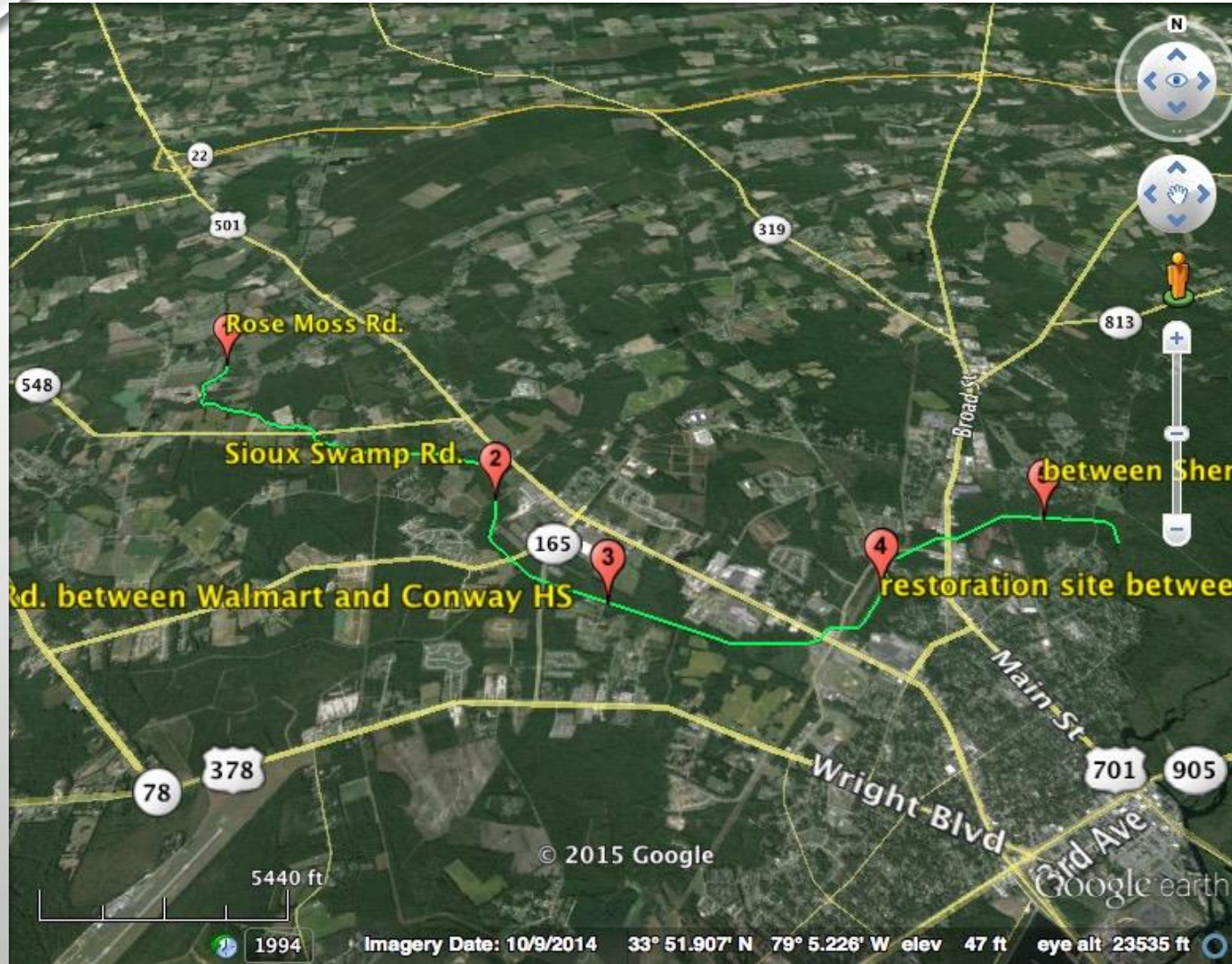


# WHO?

- CONSISTS OF:  
INSECTS,  
CRAYFISH,  
MOLLUSCS, ETC.







# CRAB TREE SWAMP SAMPLING LOCATION S





# ROSS MOSS ROAD





# SIoux SWAMP





# SHERWOOD D DRIVE





# RIFFLING METHOD





# MULTI- HABITAT COLLECTION





# SIEVE BUCKE