

# Everyone's Favorite Part

The Technical Stuff

# DRIFT

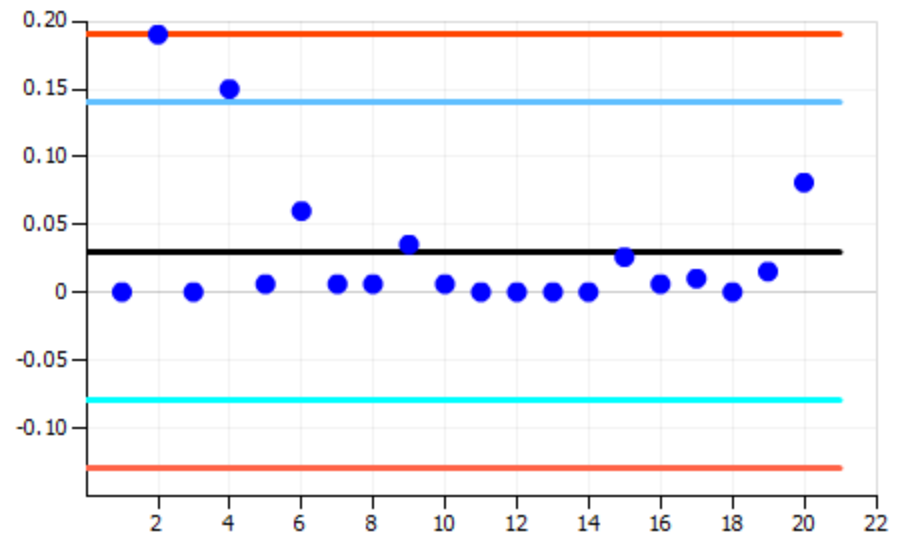
If you see the readings are sequential and not stabilizing, keep taking measurements. Takes longer when the temps are cold- Sorry!

el #  Time Measured:

Sample Readings: Watch for drift in last two readings

Rep	pH (drift $\leq 0.10$ )	Temp ( $^{\circ}\text{C}$ ) (drift $< 0.10$ )
1	6.99	13.4
2	7.18	13.4
3	7.37	13.4
4		
(5)		
(6)		

chart by amCharts.com



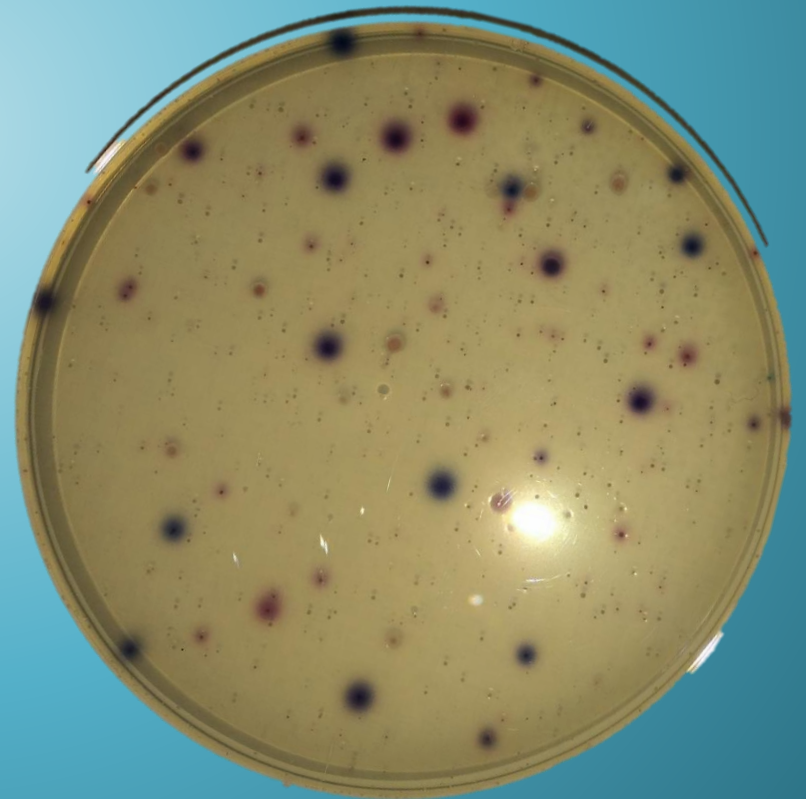
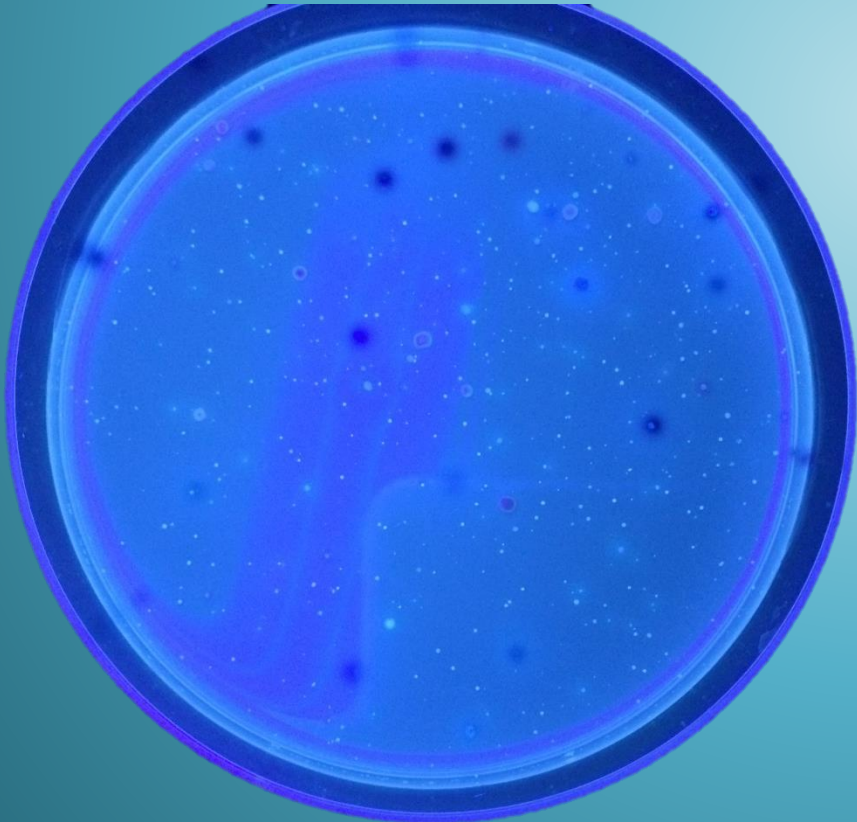
# Retraining

- QAPP
- Happen Periodically
  
- WQX

Coliscan® Easygel® was approved by the U.S. EPA Region 4 for use in the bacteriological monitoring of surface waters as part of the program developed by the Alabama Water Watch. As a result of this program and many other studies, Coliscan® Easygel® has become the preferred method for bacteriological monitoring in water watch programs throughout the United States.

# Bacteria

- Read back time- Recommended 18-20 hours, but up to 24 hours is allowable
- 



# New Datasheets



# New Meters

