

INSTALLING SAFECONNECT Apple Computers

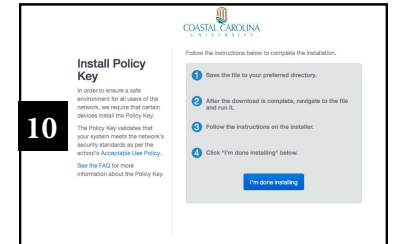
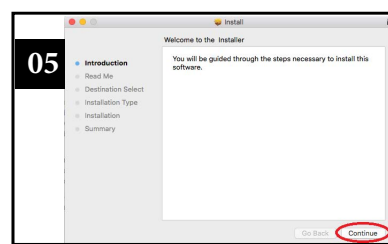
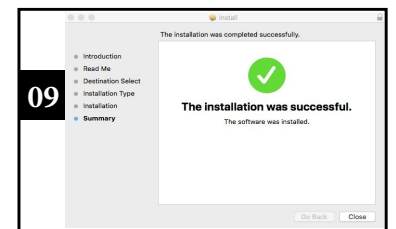
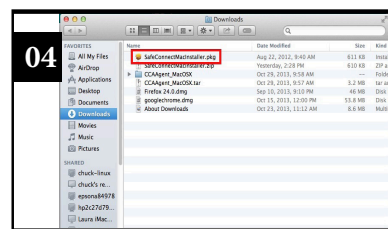
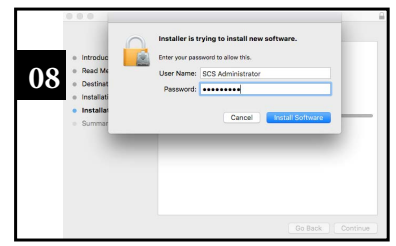
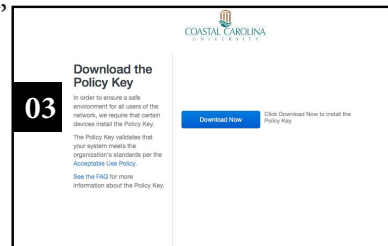
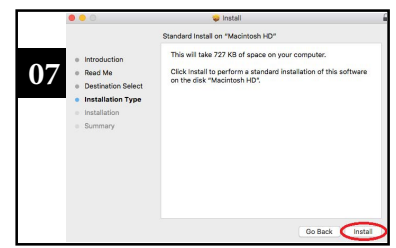
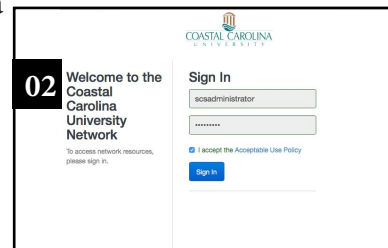
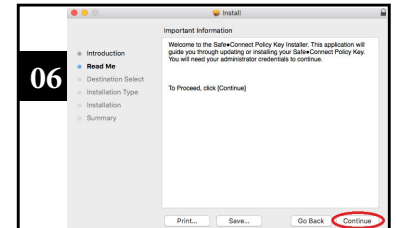
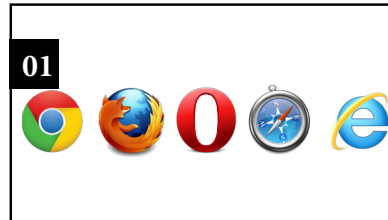


SafeConnect is a NAC (network access control) tool to help ensure that only current CCU students, faculty and staff use CCU network resources. It validates that each system meets certain security requirements to keep the network safe for all users. Specifically, SafeConnect checks the following:

- SafeConnect Policy Key installed
- Authentication using CCU username/password
- Operating system has the latest updates
- Antivirus software installed and up to date

HERE'S HOW TO CONNECT

1. Connect the device WiFi to CCUResnet or CCUwired. From the desktop, open up a browser.
2. If you are not immediately prompted to enter your CCU username/password, enter a non-CCU webpage in the address bar. The page will be redirected to a new site, prompting you to install the SafeConnect policy key on your computer. Log in using your CCU username and password.
3. Read the information on the page, then click, "Download Now."
4. After your download has finished, find it within the downloads folder of your file browser. Double-click it to launch the installation.
5. Click "Continue" to move to the next step.
6. Click "Continue" to move to the next step.
7. Click "Install."
8. You will be prompted to enter the password you use to log in to your Mac. Click "Install Software."
9. Click "Close" to exit the installation screen.
10. Click "I'm done installing". You are now finished and have access to the internet.



NOTE: Video tutorials are available online. Visit www.coastal.edu/scs and choose Technology Tutorials from the left-hand navigation menu.

Questions? Contact ITS/Student Computing Services • Kearns 113 • 843-349-2908
Twitter: @CCU_SCS • Facebook: @CCUSCS • For discrimination concerns: www.coastal.edu/titleix.