

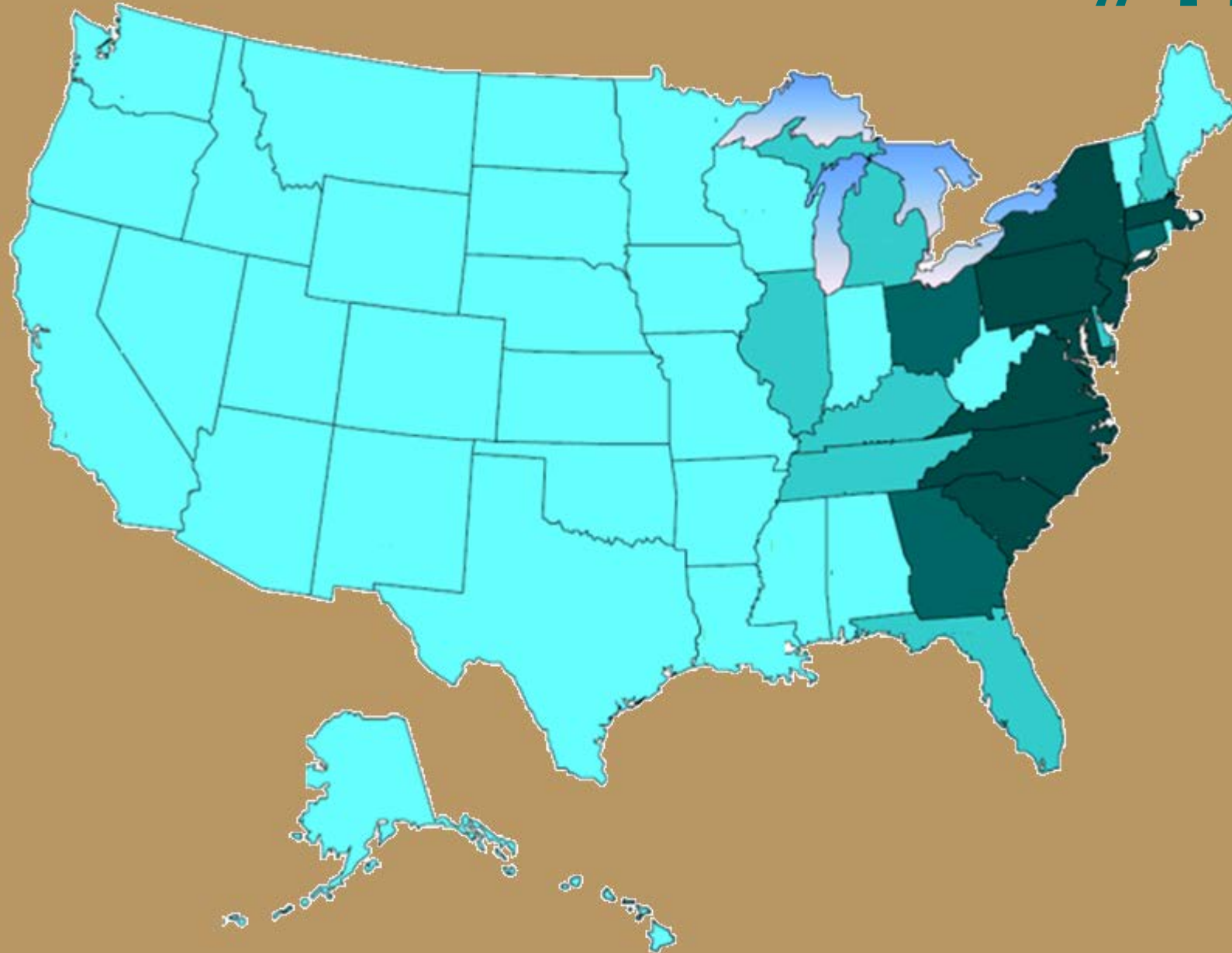


# Application 101

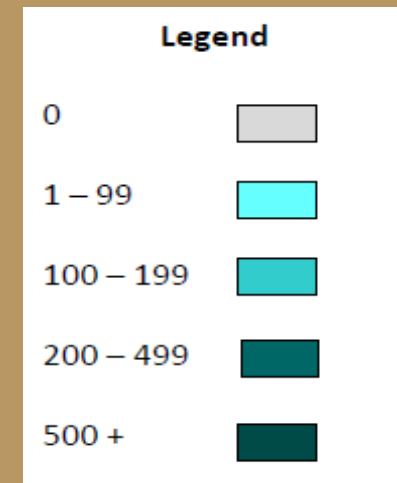
Dr. Amanda Craddock,  
Vice President for Enrollment  
Management



# #TEALNATION



OVER  
**18,000**  
APPLICATIONS



# First-Year Application Dates

- **Early Decision (ED):** Students commit to a first-choice college at the time of application, and if admitted, agree to enroll and withdraw their other college applications. Colleges may offer ED I or ED II with different deadlines. Students are required to commit before May 1.
  - **Apply by October 15**
  - **Notification by December 1**
  - **Enroll by Jan.15**



# First-Year Application Dates

- **Early Action(EA):** Students apply by an earlier deadline to receive a decision in advance of the college's Regular Notification date.
  - **Apply by November 15**
  - **Notification by December 15**
  - **Enroll by May 1**

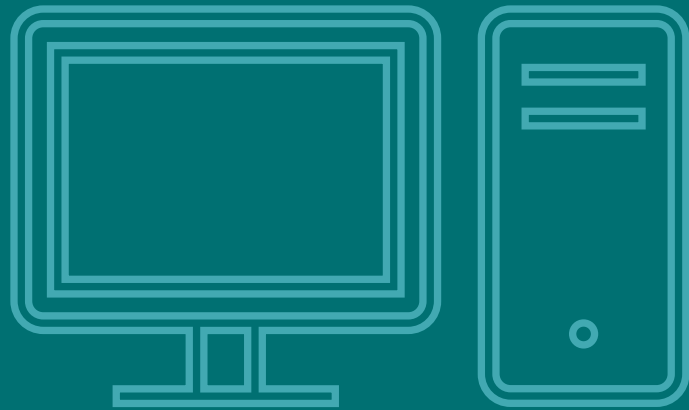
# First-Year Application Dates

- **Regular Decision (RD):** Students submit their applications by a specified deadline and are notified of a decision within a clearly stated period of time.
  - **Apply by February 1**
  - **Notification by March 1**
  - **Enroll by May 1**

# 2 Ways to Apply

**CCU Application**

[www.coastal.edu/apply](http://www.coastal.edu/apply)



**Common App**

[www.commonapp.org](http://www.commonapp.org)



# 20 CORE REQUIREMENTS FOR ADMISSION

<b>ENGLISH</b>	<b>4 Units</b>
<b>MATH (INCLUDING ALGEBRA 1, GEOMETRY, ALGEBRA 2, AND A HIGHER LEVEL MATH COURSE)</b>	<b>4 Units</b>
<b>LABORATORY SCIENCE</b>	<b>3 Units</b>
<b>FOREIGN LANGUAGE (MUST BE SAME LANGUAGE)</b>	<b>2 Units</b>
<b>SOCIAL SCIENCES (U.S. HISTORY REQUIRED)</b>	<b>3 Units</b>
<b>FINE ARTS</b>	<b>1 Unit</b>
<b>P.E./ROTC</b>	<b>1 Unit</b>
<b>ACADEMIC ELECTIVES</b>	<b>2 Units</b>

# FIRST-YEAR PROFILE

**GPA**

3.3 - 4.0

**ACT**

19-24

**SAT**

1020-1150



# TEST OPTIONAL ADMISSION

3.5+  
GPA + Rigorous College  
Prep Program = Test Optional  
Admission

Students applying test optional are strongly encouraged to submit letters of recommendation and a personal statement and/or essay.

*More information at: [coastal.edu/admissions/testop](https://coastal.edu/admissions/testop)*

# SPECIAL PROGRAMS

## Bridge Program

- Jointly administered by CCU and HGTC
- Support for transition from high school to college
- Based on SAT/ACT and/or high school GPA

## CEaL Program

- Conditional admission to students below admission requirements
- Invitation only to select group of students
- First semester program

# TRANSFER ADMISSION

## JUNE 1

PRIORITY Application Date

---

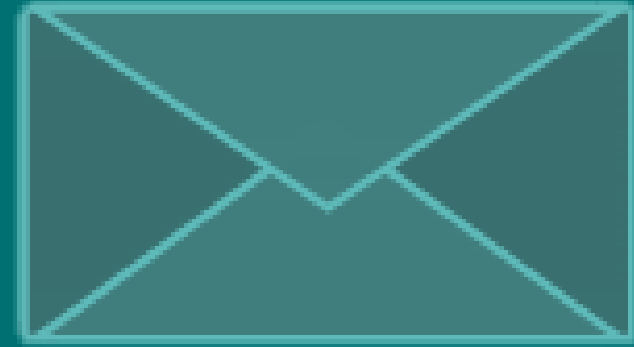
## 2 WAYS TO APPLY

CCU Application

[www.coastal.edu/apply](http://www.coastal.edu/apply)

Common App

[www.commonapp.org](http://www.commonapp.org)



## 4 WEEKS

UNTIL YOU RECEIVE

**YOUR DECISION**

*\*ONCE CCU RECEIVES ALL  
REQUIRED INFORMATION*

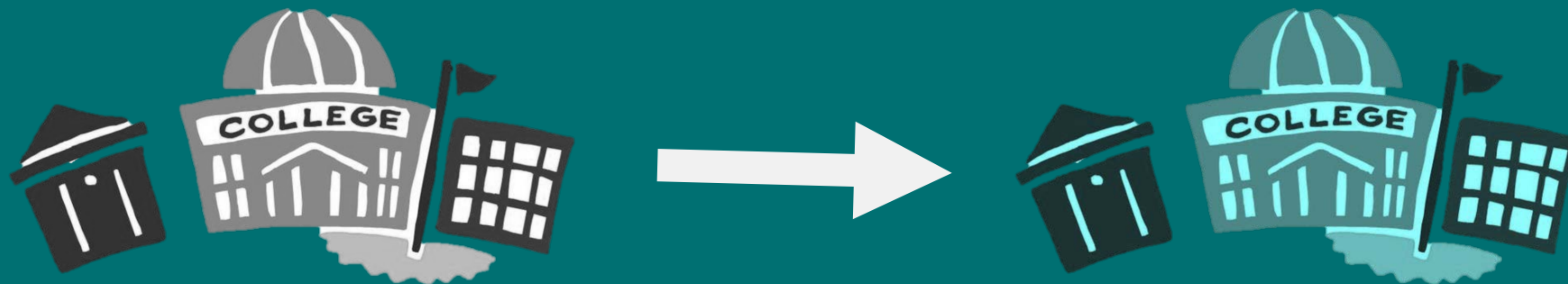
# TRANSFER REQUIREMENTS

3.0

AVERAGE COLLEGIATE GPA

24

TRANSFERABLE  
COLLEGIATE CREDIT HOURS



# HTC Honors College

## First-Year Students:


### How to Apply?

- Indicate interest on CCU application
- If accepted, will be notified by letter

## Transfer Students:

### How to Apply?

- Indicate interest on CCU application
- If accepted, will be notified by letter
- Accept transferred honors credit



2023 – 2024	IN-STATE	OUT-OF-STATE
TUITION	\$11,640	\$29,628
HOUSING*	\$7,340	\$7,340
MEAL PLAN**	\$4,900	\$4,900
TOTAL	\$23,880	\$41,878

*\*RATE BASED ON A DOUBLE OCCUPANCY ROOM IN CHANTICLEER, DECENZO, SINGLETON-YOUNG, OR TRADITION HALLS*

*\*\*RATE BASED ON UNLIMITED MEAL PLAN*

Visit: [www.coastal.edu/admissionsaid/tuitionfees/](http://www.coastal.edu/admissionsaid/tuitionfees/)



<i>First-Time Merit Awards</i>	<i>In-State</i>	<i>Out-of-State</i>
Presidential Scholarship	\$6,000	\$17,988 (equal to in-state tuition)
President's Award	\$5,000	\$13,000
Provost's Award	\$4,000	\$10,000
Coastal Award	\$3,000	\$7,500
Teal Award	\$2,000	\$4,500
Visual & Performing Arts Award	\$3,000	\$7,500
PGA Trustee Award	\$5,000	\$13,000
PGA University Award	\$4,000	\$10,000
PGA Wall Award	\$3,000	\$7,500
SC Scholar Award	\$1,000	N/A

A comprehensive review of the following factors may be considered in determining eligibility:

- Cumulative high school grade point averages – both weighted and unweighted, as applicable
- Standardized test scores – SAT (combined math and evidenced based reading and writing scores) or ACT (composite score)
- Institutionally calculated “core” grade point
- Rigor of high school coursework (i.e., Honors, Advanced Placement, International Baccalaureate, dual enrollment)
- Rank within graduating class
- Academic recommendations
- Writing samples
- Resumes, including leadership and work experience, as well as extracurricular involvement and activities

<i>Transfer Merit Awards</i>	<i>In-State</i>	<i>Out-of-State</i>
Transfer Level 1 Award	\$4,000	\$10,000
Transfer Level II Award	\$3,000	\$7,500
Transfer Level III Award	\$2,000	\$4,500
Visual & Performing Arts Transfer Award	\$3,000	\$7,500
PGA Transfer Award	\$3,000	\$7,500
SC Scholar Award	\$1,000	N/A

<i>Transfer Student Merit Awards</i>	<i>Preferred Academic Qualifications</i>
Transfer Level I Award	3.50 to 4.00 / 30+ transferrable hours
Transfer Level II Award	3.25 to 3.49 / 30+ transferrable hours
Transfer Level III Award	2.90 to 3.24 / 30+ transferrable hours
Visual and Performing Arts Award†	minimum 2.75 GPA / 30+ transferrable hours
PGA Golf Management Transfer Award‡	minimum 2.75 GPA / 30+ transferrable hours

# WHY CCU?



## VALUE ACCOLADES

7<sup>th</sup> in the South  
among all schools in the  
Best Value Category

11 Consecutive Years  
on America's  
Best College Buys list

1<sup>st</sup> college in S.C.  
to be recognized for  
exceptional standards  
of inclusion by  
Strive for College



# STUDENT ENROLLMENT

10,400

---

6

ACADEMIC COLLEGES

---

100

PROGRAMS OF STUDY



# 16:1

STUDENT TO FACULTY  
RATIO

---

# 79%

OF FACULTY POSSESS  
DOCTORAL, TERMINAL  
DEGREES





# ACADEMIC COLLEGES

---

Wall College of Business Administration

---

Spadoni College of Education and Social Sciences

---

Edwards College of Humanities and Fine Arts

---

Gupta College of Science

---

Conway Medical Center College of Health and  
Human Performance

---

HTC Honors College







COASTAL CAROLINA  
UNIVERSITY®

MEET YOUR ADMISSIONS  
COUNSELOR:

[www.coastal.edu/  
admissions/staff](http://www.coastal.edu/admissions/staff)