

NON-DEGREE SEEKING

UNIVERSITY COLLEGE

# FACT BOOK



Fall 2013



# **NON-DEGREE SEEKING**

## **TABLE OF CONTENTS**

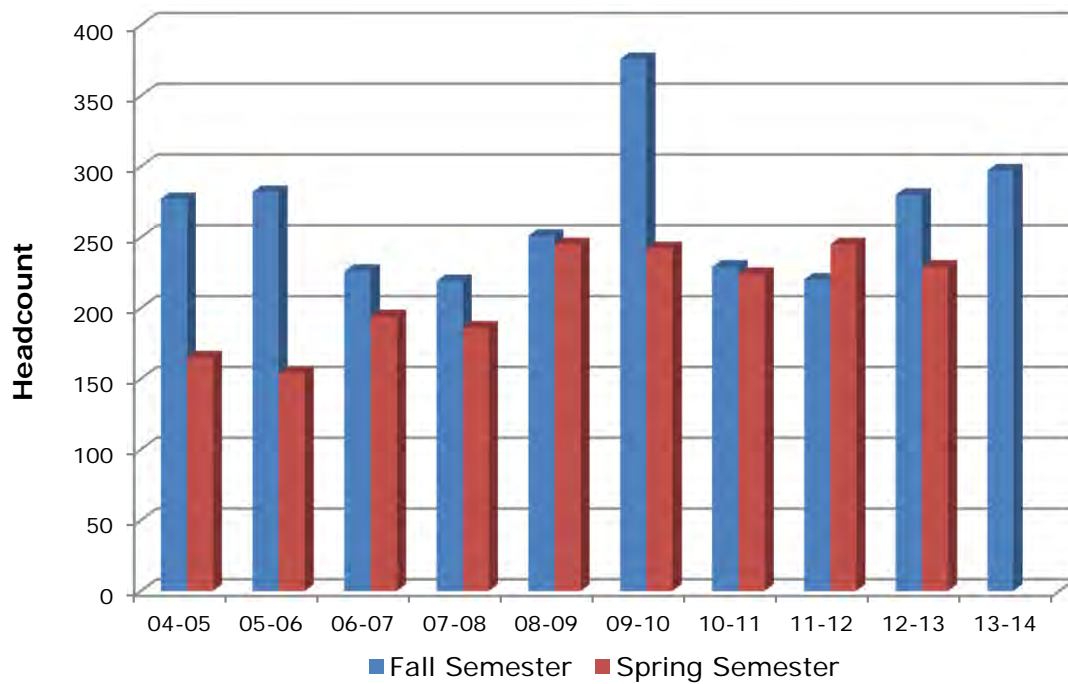
Fall and Spring Enrollment Trends .....	51
Summer Enrollment Trends .....	52
Fall Enrollment Trends by Race .....	53
Fall Enrollment Trends by Gender .....	54
Residency Classification of Students for Fee Payment Purposes .....	55
Geographic Distribution by State .....	56
Geographic Distribution by Country .....	57

**University College  
Fall and Spring Semester  
Enrollment Trends  
2004-2013**

**Undergraduate Non-Degree Seeking**

Fall Semester	
Year	Headcount
2004	277
2005	282
2006	226
2007	219
2008	251
2009	376
2010	229
2011	220
2012	280
2013	297

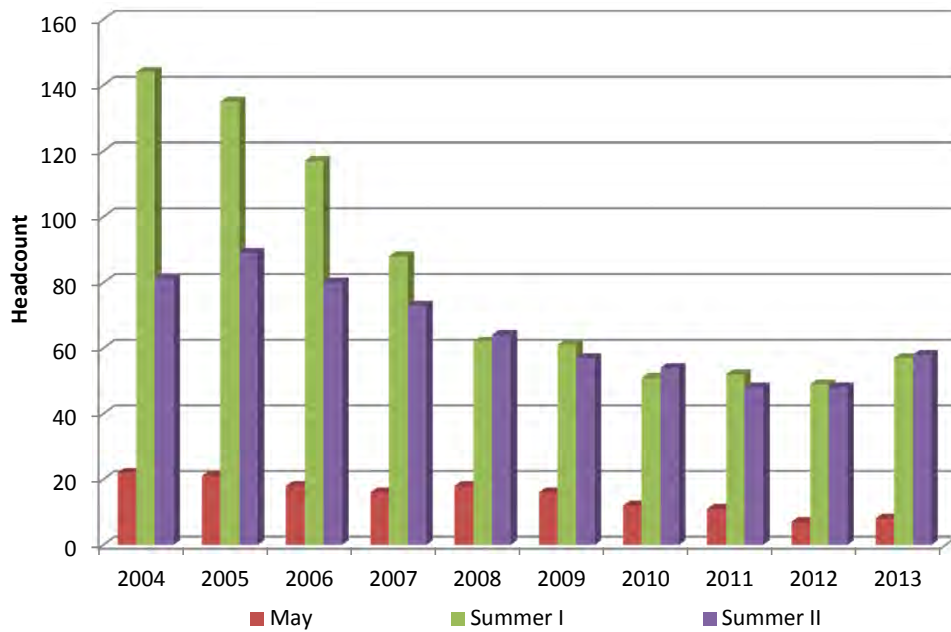
Spring Semester	
Year	Headcount
2005	165
2006	154
2007	194
2008	186
2009	245
2010	242
2011	224
2012	245
2013	229



**University College  
Summer Semesters  
Enrollment Trends  
2004-2013**

**Undergraduate Non-Degree Seeking**

Year	May Semester # Students	Summer I Semester # Students	Summer II Semester # Students	Total # Students
2004	22	144	81	247
2005	21	135	89	245
2006	18	117	80	215
2007	16	88	73	177
2008	18	62	64	144
2009	16	61	57	134
2010	12	51	54	117
2011	11	52	48	111
2012	7	49	48	104
2013	8	57	58	123

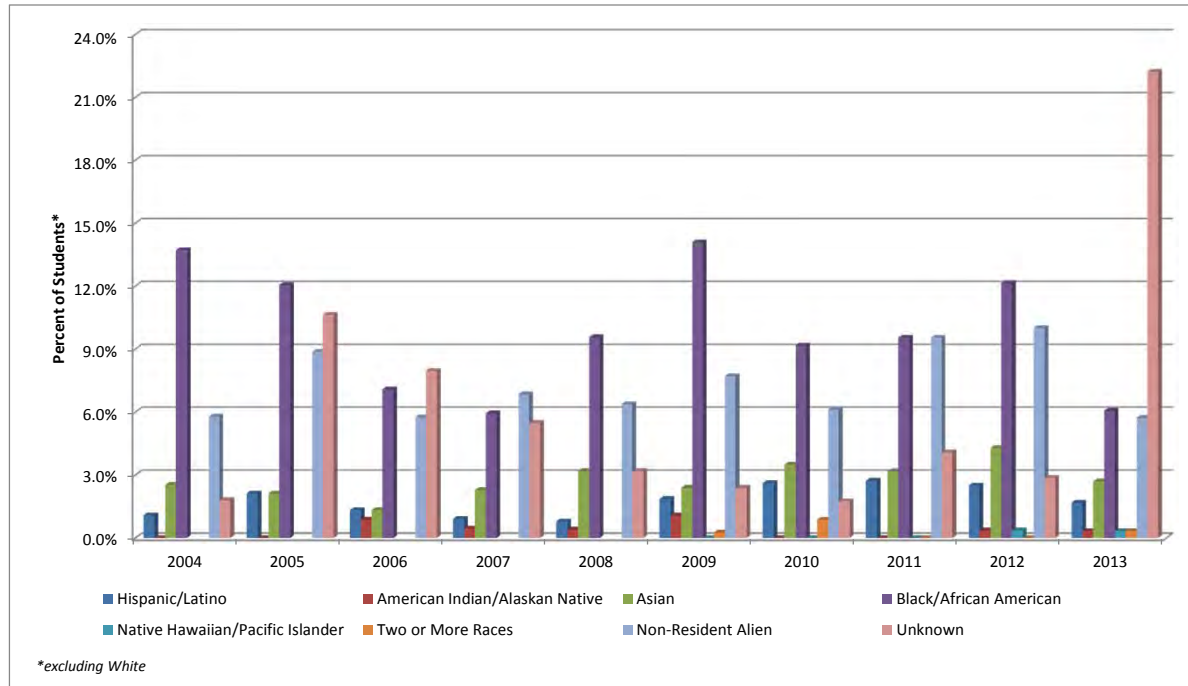


**University College  
Fall Enrollment Trends  
By Race  
Fall Semesters 2004-2013**

**Undergraduate Non-Degree Seeking**

ETHNICITY	2004		2005		2006		2007		2008		2009*		2010		2011		2012		2013	
	#	%	#	%	#	%	#	%	#	%	#	%	#	%	#	%	#	%	#	%
Hispanic/Latino	3	1.1%	6	2.1%	3	1.3%	2	0.9%	2	0.8%	7	1.9%	6	2.6%	6	2.7%	7	2.5%	5	1.7%
<b>RACE</b>																				
American Indian/ Alaskan Native	0	0.0%	0	0.0%	2	0.9%	1	0.5%	1	0.4%	4	1.1%	0	0.0%	0	0.0%	1	0.4%	1	0.3%
Asian	7	2.5%	6	2.1%	3	1.3%	5	2.3%	8	3.2%	9	2.4%	8	3.5%	7	3.2%	12	4.3%	8	2.7%
Black/ African American	38	13.7%	34	12.1%	16	7.1%	13	5.9%	24	9.6%	53	14.1%	21	9.2%	21	9.5%	34	12.1%	18	6.1%
Native Hawaiian/ Pacific Islander	---	N/A	---	N/A	---	N/A	---	N/A	---	N/A	0	0.0%	0	0.0%	0	0.0%	1	0.4%	1	0.3%
White	208	75.1%	181	64.2%	171	75.7%	171	78.1%	192	76.5%	264	70.2%	174	76.0%	156	70.9%	189	67.5%	180	60.6%
Two or More Races	---	N/A	---	N/A	---	N/A	---	N/A	---	N/A	1	0.3%	2	0.9%	0	0.0%	0	0.0%	1	0.3%
Non-Resident Alien	16	5.8%	25	8.9%	13	5.8%	15	6.8%	16	6.4%	29	7.7%	14	6.1%	21	9.5%	28	10.0%	17	5.7%
Unknown	5	1.8%	30	10.6%	18	8.0%	12	5.5%	8	3.2%	9	2.4%	4	1.7%	9	4.1%	8	2.9%	66	22.2%
<b>TOTAL</b>	<b>277</b>	<b>100.0%</b>	<b>282</b>	<b>100.0%</b>	<b>226</b>	<b>100.0%</b>	<b>219</b>	<b>100.0%</b>	<b>251</b>	<b>100.0%</b>	<b>376</b>	<b>100.0%</b>	<b>229</b>	<b>100.0%</b>	<b>220</b>	<b>100.0%</b>	<b>280</b>	<b>100.0%</b>	<b>297</b>	<b>100.0%</b>

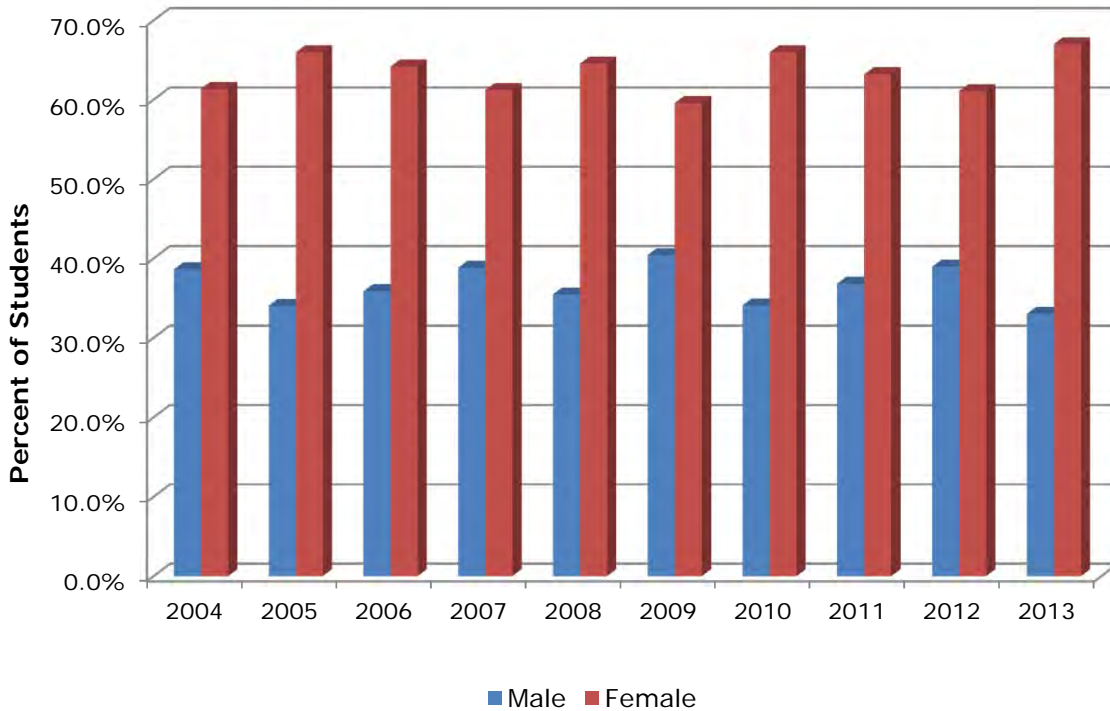
\*Note: Institutions required to use new Integrated Postsecondary Education Data System (IPEDS) racial/ethnic categories for reporting.



**University College  
Enrollment Trends by Gender  
Fall Semesters 2004-2013**

**Undergraduate Non-Degree Seeking**

Year	Male		Female		Total
	#	%	#	%	
2004	107	38.6%	170	61.4%	<b>277</b>
2005	96	34.0%	186	66.0%	<b>282</b>
2006	81	35.8%	145	64.2%	<b>226</b>
2007	85	38.8%	134	61.2%	<b>219</b>
2008	89	35.5%	162	64.5%	<b>251</b>
2009	152	40.4%	224	59.6%	<b>376</b>
2010	78	34.1%	151	65.9%	<b>229</b>
2011	81	36.8%	139	63.2%	<b>220</b>
2012	109	38.9%	171	61.1%	<b>280</b>
2013	98	33.0%	199	67.0%	<b>297</b>

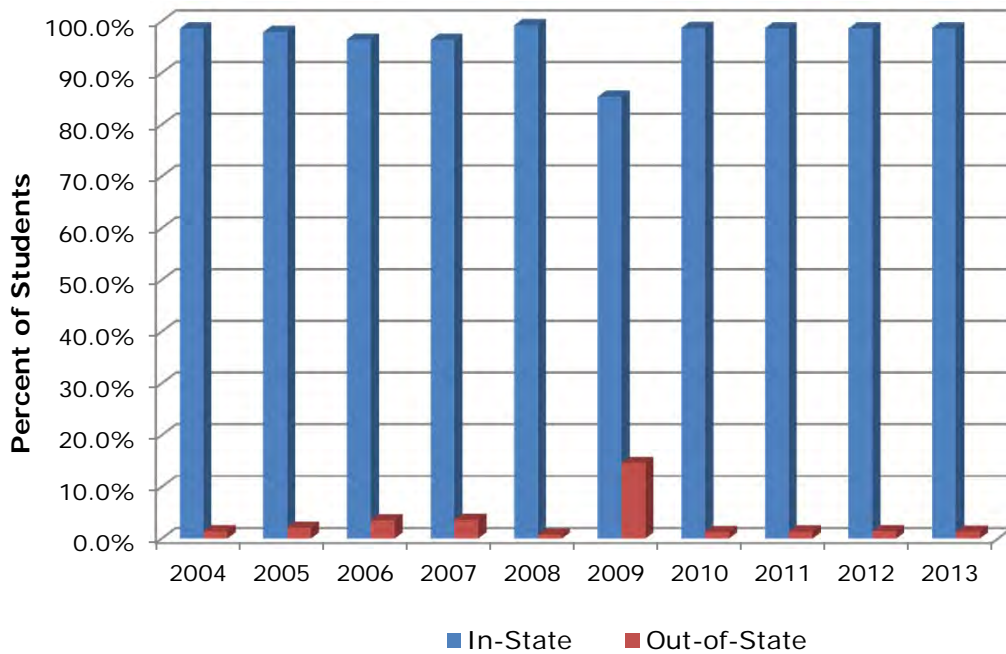


**University College  
Residency Classification of Students  
For Fee Payment Purposes\*  
Fall Semesters 2004-2013**

**Undergraduate Non-Degree Seeking**

Year	In-State		Out-of-State		Total
	#	%	#	%	
2004	273	98.6%	4	1.4%	<b>277</b>
2005	276	97.9%	6	2.1%	<b>282</b>
2006	218	96.5%	8	3.5%	<b>226</b>
2007	211	96.3%	8	3.7%	<b>219</b>
2008	249	99.2%	2	0.8%	<b>251</b>
2009	321	85.4%	55	14.6%	<b>376</b>
2010	226	98.7%	3	1.3%	<b>229</b>
2011	217	98.6%	3	1.4%	<b>220</b>
2012	276	98.6%	4	1.4%	<b>280</b>
2013	293	98.7%	4	1.3%	<b>297</b>

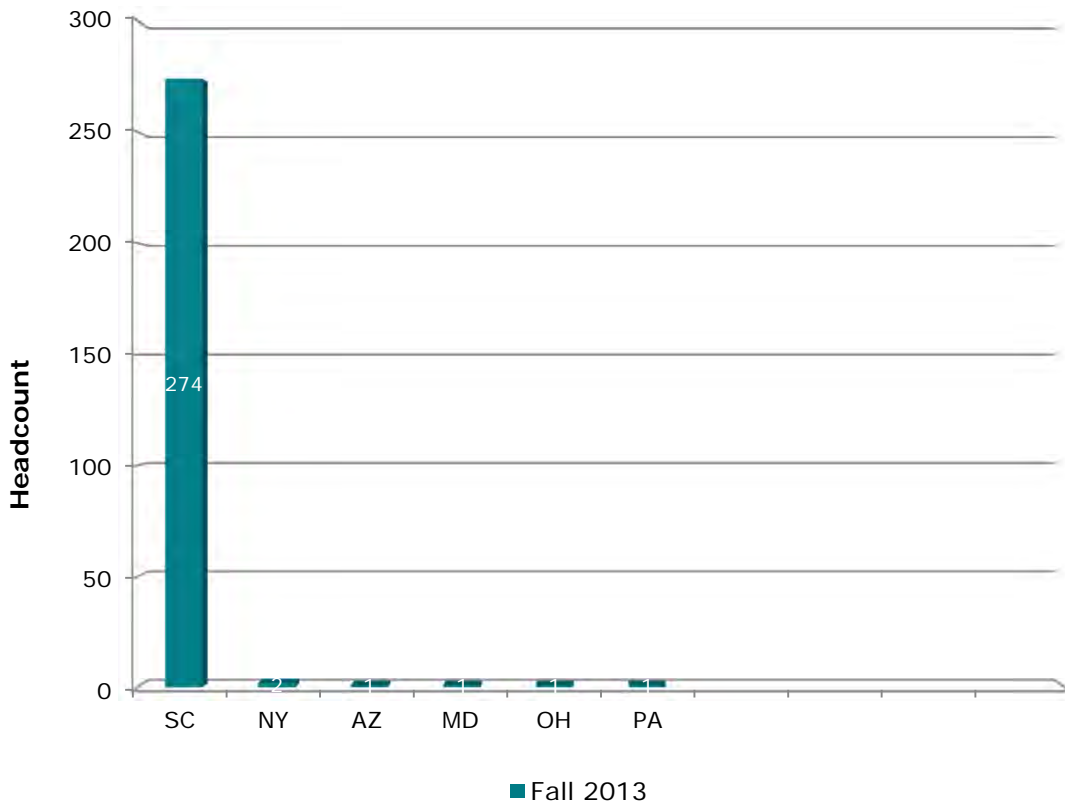
\*Residency classification for fee payment purposes is defined by South Carolina statute.



**University College  
Geographic Distribution of  
Enrollment by State  
Fall Semesters 2009-2013**

**Undergraduate Non-Degree Seeking**

State	2009	2010	2011	2012	2013
South Carolina	287	212	195	247	274
New York	3	0	0	0	2
Arizona	0	0	0	0	1
Maryland	8	0	0	1	1
Ohio	3	0	1	1	1
Pennsylvania	3	2	1	0	1
Massachusetts	4	0	0	1	0
Virginia	10	0	1	0	0
North Carolina	3	0	0	1	0
Connecticut	5	0	0	0	0
<i>Other States</i>	<i>21</i>	<i>1</i>	<i>1</i>	<i>1</i>	<i>0</i>





**University College  
Geographic Distribution of  
Enrollment by Country  
Fall Semesters 2009-2013**

**Undergraduate Non-Degree Seeking**

<b>Country</b>	<b>2009</b>	<b>2010</b>	<b>2011</b>	<b>2012</b>	<b>2013</b>
Australia	0	0	0	4	0
Bulgaria	0	0	1	1	0
Ecuador	1	1	2	2	3
France	0	0	0	3	3
Germany	21	8	9	4	3
Japan	2	1	1	2	2
Nepal	0	0	0	0	1
South Africa	0	0	0	1	1
Spain	0	0	3	5	2
United Kingdom	4	1	3	2	2
<i>Other Countries</i>	1	3	2	4	0
<b>Total</b>	<b>29 7.7%</b>	<b>14 6.1%</b>	<b>21 9.5%</b>	<b>28 10.0%</b>	<b>17 5.7%</b>