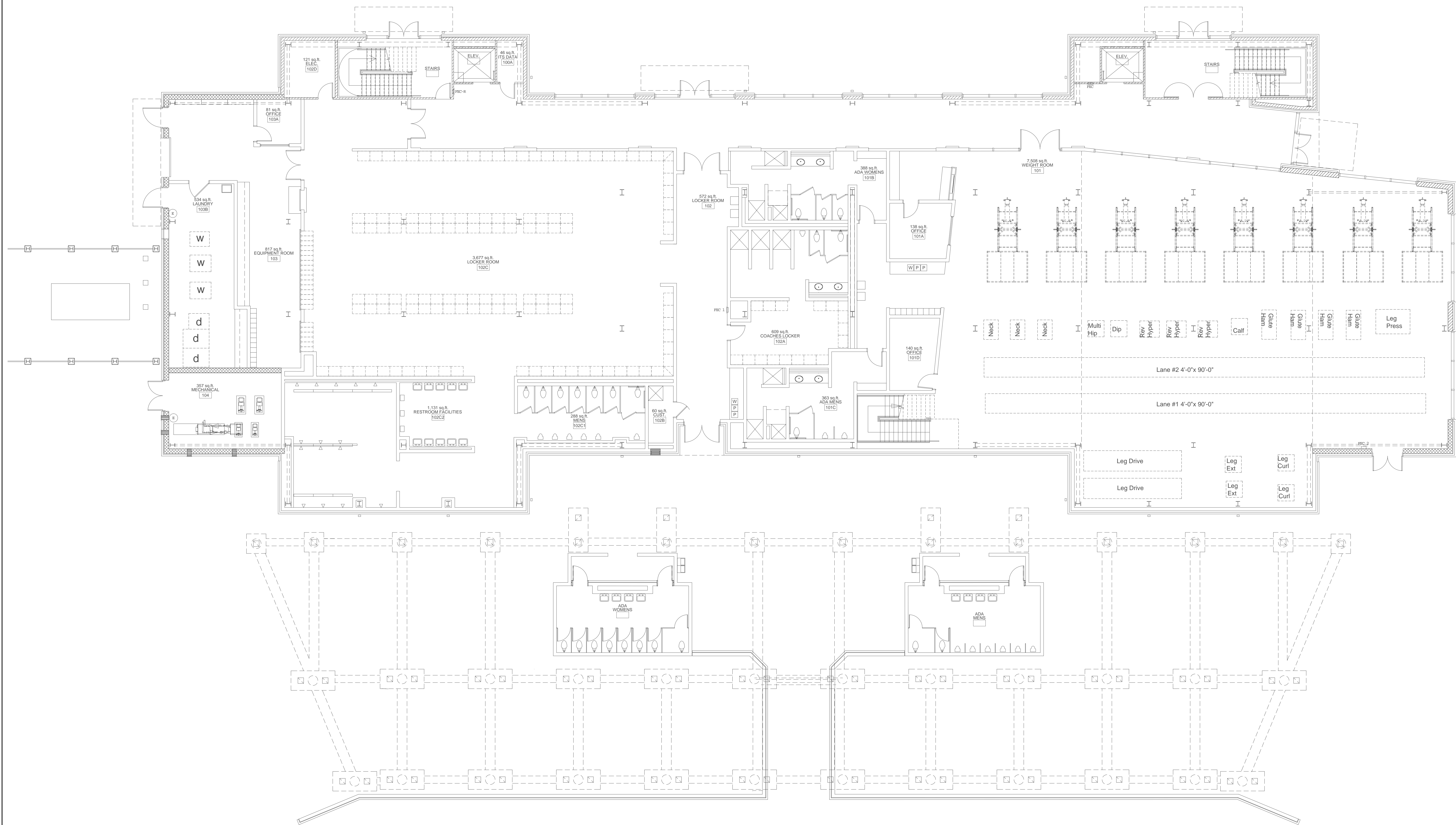


REVISION	DATE

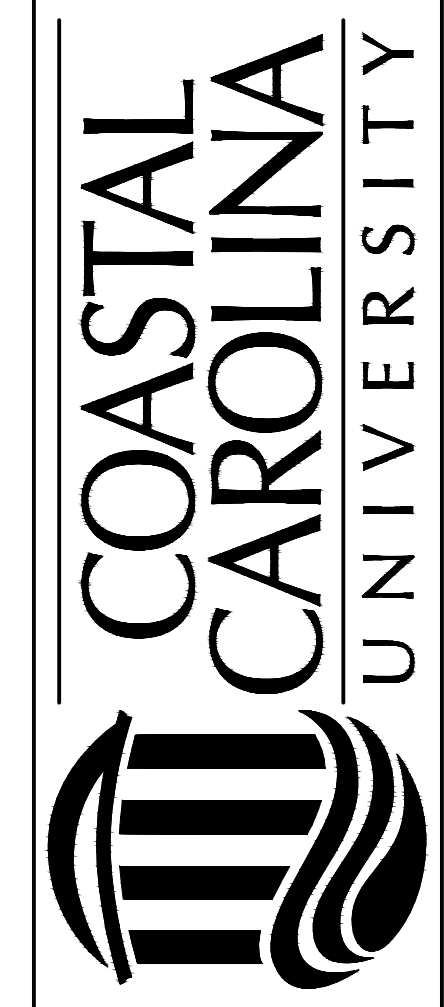


ADKINS FIELD HOUSE  
 FIRST FLOOR PLAN  
 TOTAL NET SQUARE FOOTAGE = 19,958  
 TOTAL GROSS SQUARE FOOTAGE = 21,480  
 TOTAL LINEAR FEET = 792'-9"

FIRST FLOOR PLAN  
 SCALE: 1/8" = 1'-0"

BUILDING CODE IDENTIFICATION NUMBER - 995  
 FIRST FLOOR PLAN  
 ADKINS FIELD HOUSE  
 FACILITIES DESIGN AND ENGINEERING

FACILITIES DESIGN &  
 ENGINEERING  
 P.O. BOX 261954  
 CONWAY, SC 29528  
 1270 ATLANTIC AVE.  
 CONWAY, SC 29526



SEAL

DATE: 12-17-2012  
 SCALE: SEE DWG.  
 DESIGN BY: CCU  
 DRAWN BY: MJT  
 SHEET

A-1  
 OF 3