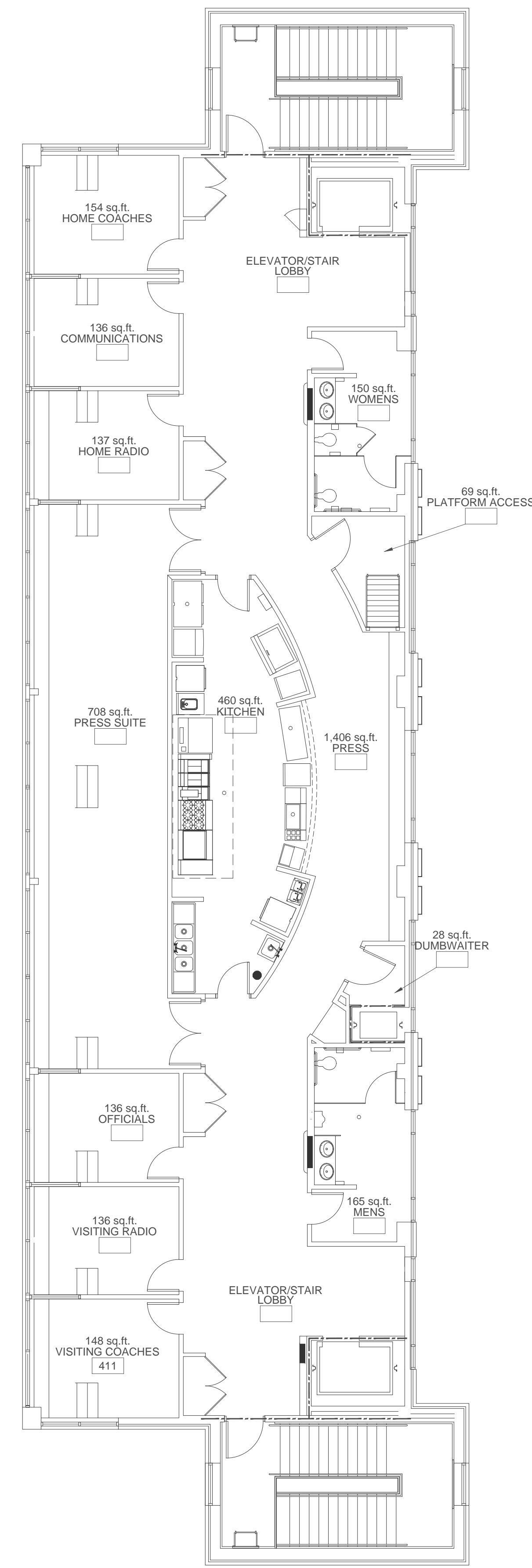


BROOKS STADIUM 3RD FLOOR
 TOTAL NET SQUARE FOOTAGE = 4,771
 TOTAL GROSS SQUARE FOOTAGE = 5,333
 TOTAL LINEAR FOOTAGE = 390'-21/2"

LEVEL 3 FLOOR PLAN

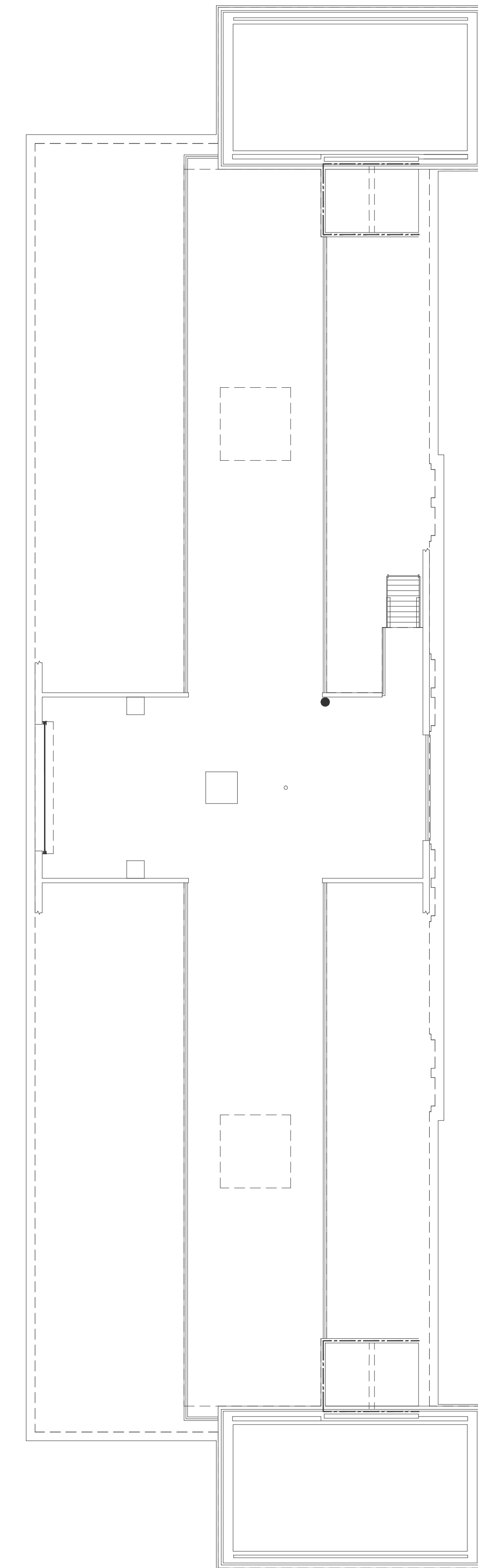
SCALE: 1/8" = 1'-0"



BROOKS STADIUM 4TH FLOOR
 TOTAL NET SQUARE FOOTAGE = 4,757
 TOTAL GROSS SQUARE FOOTAGE = 5,235

LEVEL 4 FLOOR PLAN

SCALE: 1/8" = 1'-0"



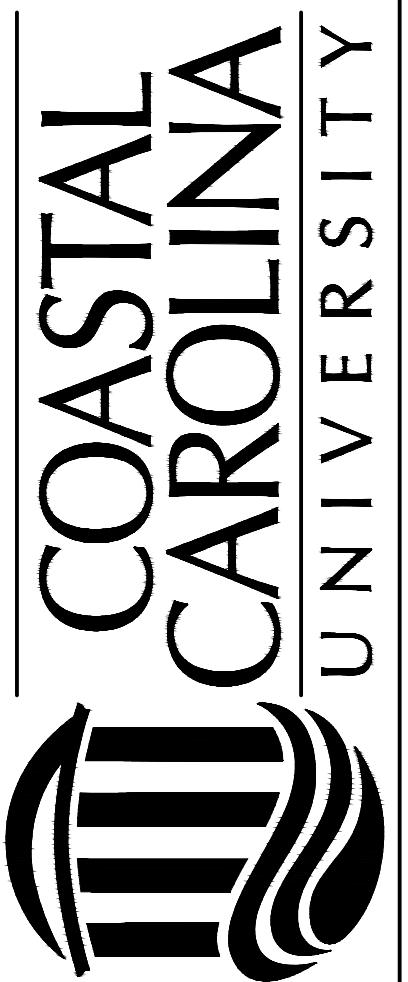
MECHANICAL MEZZANINE PLAN

SCALE: 1/8" = 1'-0"

REVISION	DATE

BUILDING CODE IDENTIFICATION NUMBER - 983
FLOOR PLANS - EAST ENTRANCE
BROOKS STADIUM - EAST ENTRANCE CONCESSIONS
FACILITIES DESIGN & ENGINEERING

FACILITIES DESIGN & ENGINEERING
 P.O. BOX 261954
 CONWAY, SC 29528
 540 University Blvd.
 Conway, SC 29528



SEAL

DATE: 12-16-2012
 SCALE: SEE DWG.
 DESIGN BY: CCU
 DRAWN BY: MJT
 SHEET

A-2

OF 4