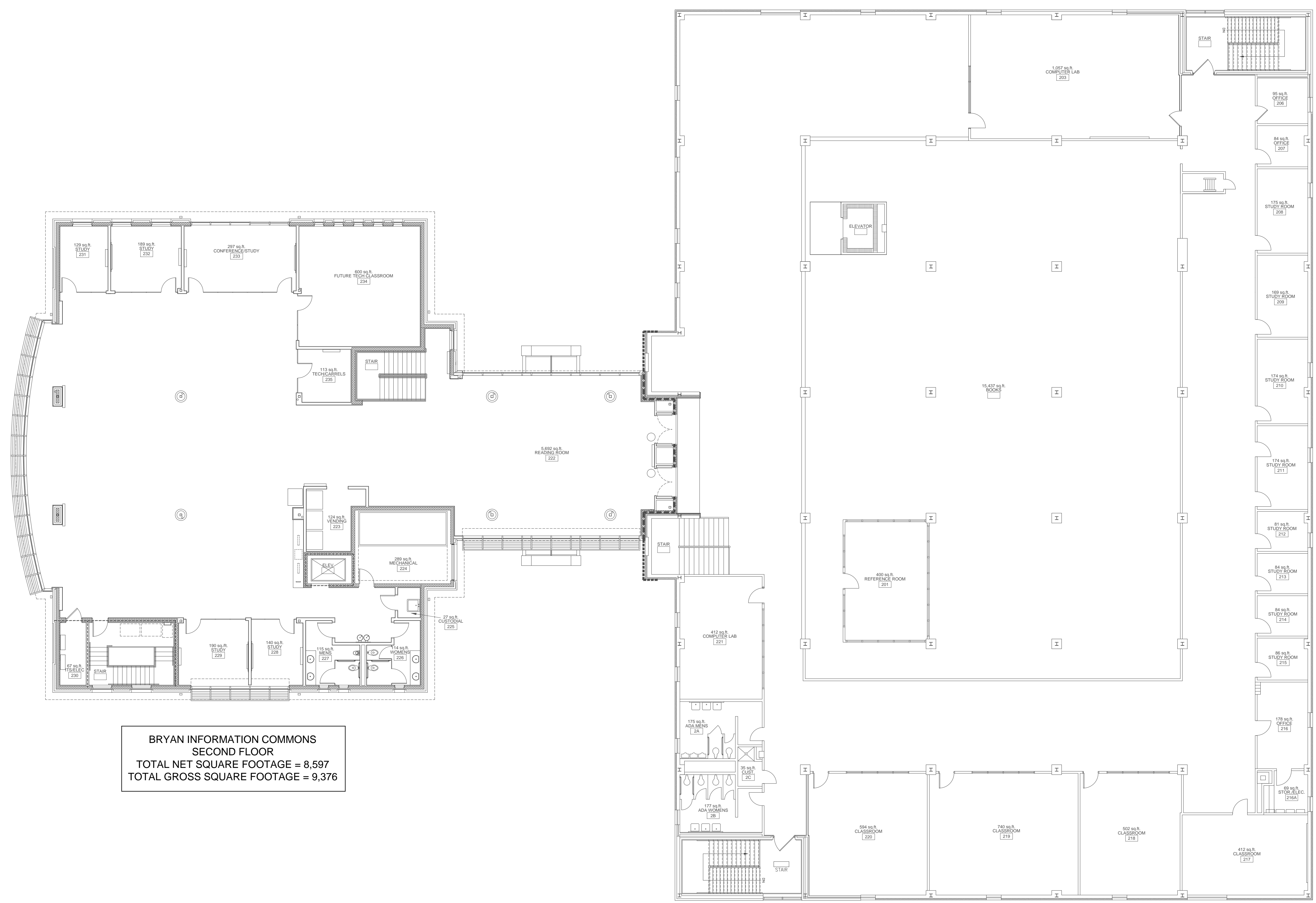


REVISION	DATE



BRYAN INFORMATION COMMONS
 SECOND FLOOR
 TOTAL NET SQUARE FOOTAGE = 8,597
 TOTAL GROSS SQUARE FOOTAGE = 9,376

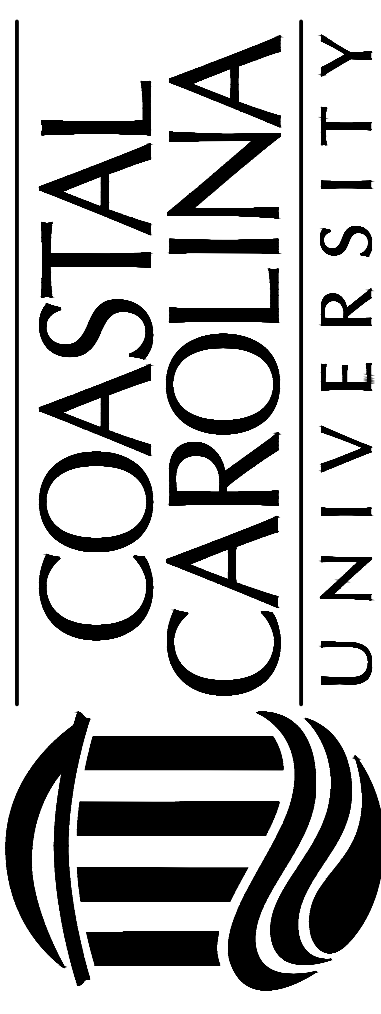
KIMBEL LIBRARY
 SECOND FLOOR
 TOTAL NET SQUARE FOOTAGE = 22,603
 TOTAL GROSS SQUARE FOOTAGE = 23,496

SECOND FLOOR PLAN

SCALE: 3/32" = 1'-0"

PROJECT NO. H17-N081-MJ
 SECOND FLOOR PLAN
 KIMBEL LIBRARY FLOORING REPLACEMENT
 FACILITIES DESIGN & ENGINEERING

FACILITIES DESIGN &
 ENGINEERING
 P.O. BOX 261954
 CONWAY, SC 29528
 376 University Blvd.
 CONWAY, SC 29526



SEAL

DATE: 07-15-2014
 SCALE: SEE DWG.
 DESIGN BY: CCU
 DRAWN BY: MJT

SHEET