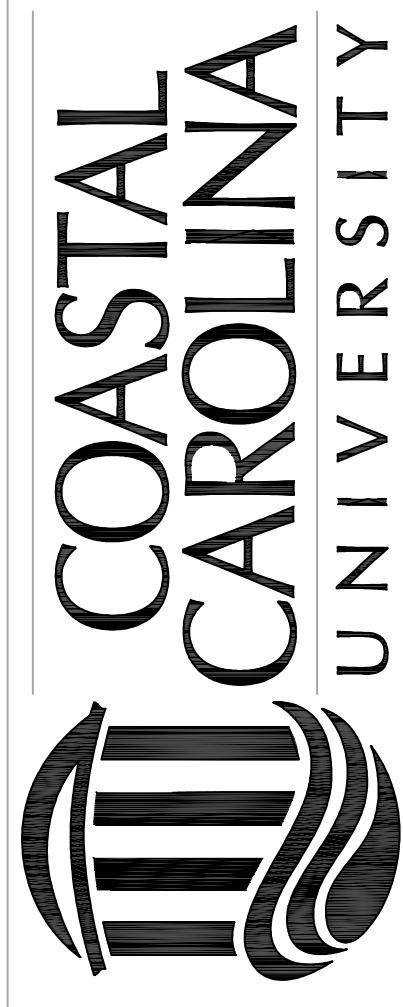


REVISION	DATE

LIB JACKSON
STUDENT UNION
100 Spadoni Park Circle
CONWAY, SC 29526

LIB JACKSON STUDENT UNION
FIRST FLOOR PLAN - BUILDING B
BUILDING CODE: LJSU IDENTIFICATION NUMBER: 360

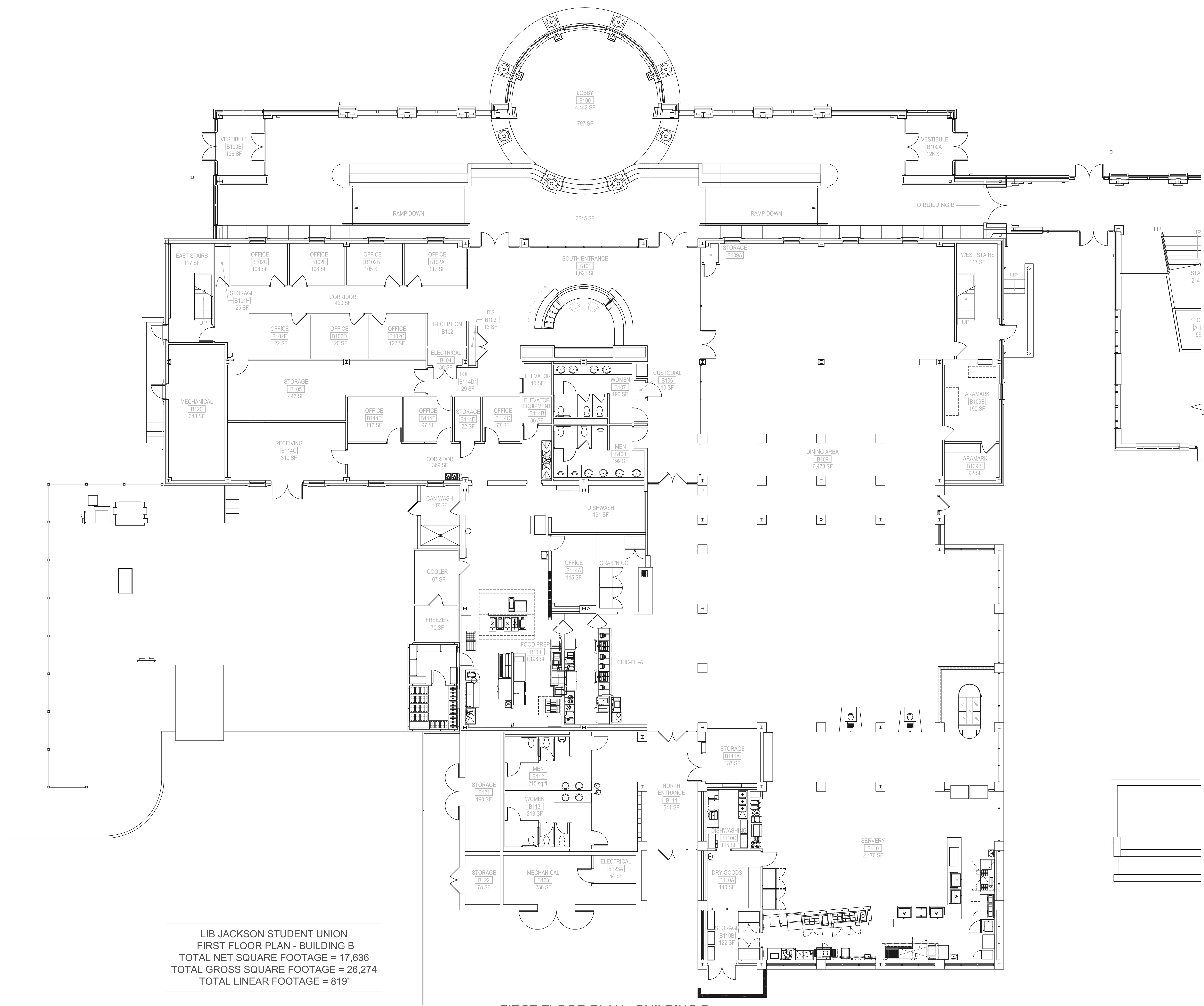
FACILITIES DESIGN &
ENGINEERING
P.O. BOX 261954
CONWAY, SC 29528



SEAL

DATE: 9-16-2015
SCALE: 1/8" = 1'-0"
DESIGN BY: CCU
DRAWN BY: MJT & CDW
SHEET

A-3
OF 4



LIB JACKSON STUDENT UNION
FIRST FLOOR PLAN - BUILDING B
TOTAL NET SQUARE FOOTAGE = 17,636
TOTAL GROSS SQUARE FOOTAGE = 26,274
TOTAL LINEAR FOOTAGE = 819'

FIRST FLOOR PLAN - BUILDING B
SCALE: 1/8" = 1' - 0"